

Neighbourhood Plan Steering Group
Launch Event
Held on Saturday 28 March 2015
From 10.00 – 16.00
At the Parish Hall, Church Street, Frodsham

1. Introduction

- 1.1. Frodsham's Neighbourhood Plan was formally launched on Saturday 28 March 2015 at the Parish Hall, Frodsham. The event was intended to start the process of providing the people of Frodsham to have their say on where new homes, shops, businesses & community facilities should go and what they should look like; and to identify and help protect areas of green space that are of particular importance to them.
- 1.2. 78 people, including senior citizens, adults & children attended the event. Steering Group members were on-hand to answer questions and give information.

2. Methodology

- 2.1. Maps, including a street map of Frodsham, of the geographical area of the Plan and of the Green Belt were displayed for information. Separate tables depicting "Frodsham – Old", "Frodsham – Present" and "Frodsham – Future" were set-up.
- 2.2. Visitors were invited to comment on what they liked about Frodsham, what they disliked and what they would like to change. Post-it pads for comment and coloured pens & sticky dots for identifying relevant areas (eg, for preservation, for building on, grot-spots etc) on maps were provided for use by members of the public. The "Wishing Tree", enabling visitors to write suggestions on tags and tying them to the branches proved to be popular.
- 2.3. Refreshments were provided.



3. Visitors Comments

- 3.1. Comments are summarised at:
 - Annex 1 – Maps with Sticky Dots
 - Annex 2 – Map with Coloured Pen Markings
 - Annex 3 – Comments on Post-it Notes.
- 3.2. Analysis of comments will be carried out by the NP Working Groups.

Peter Vickery and Pammi Taylor

9 April 2015

Launch Event

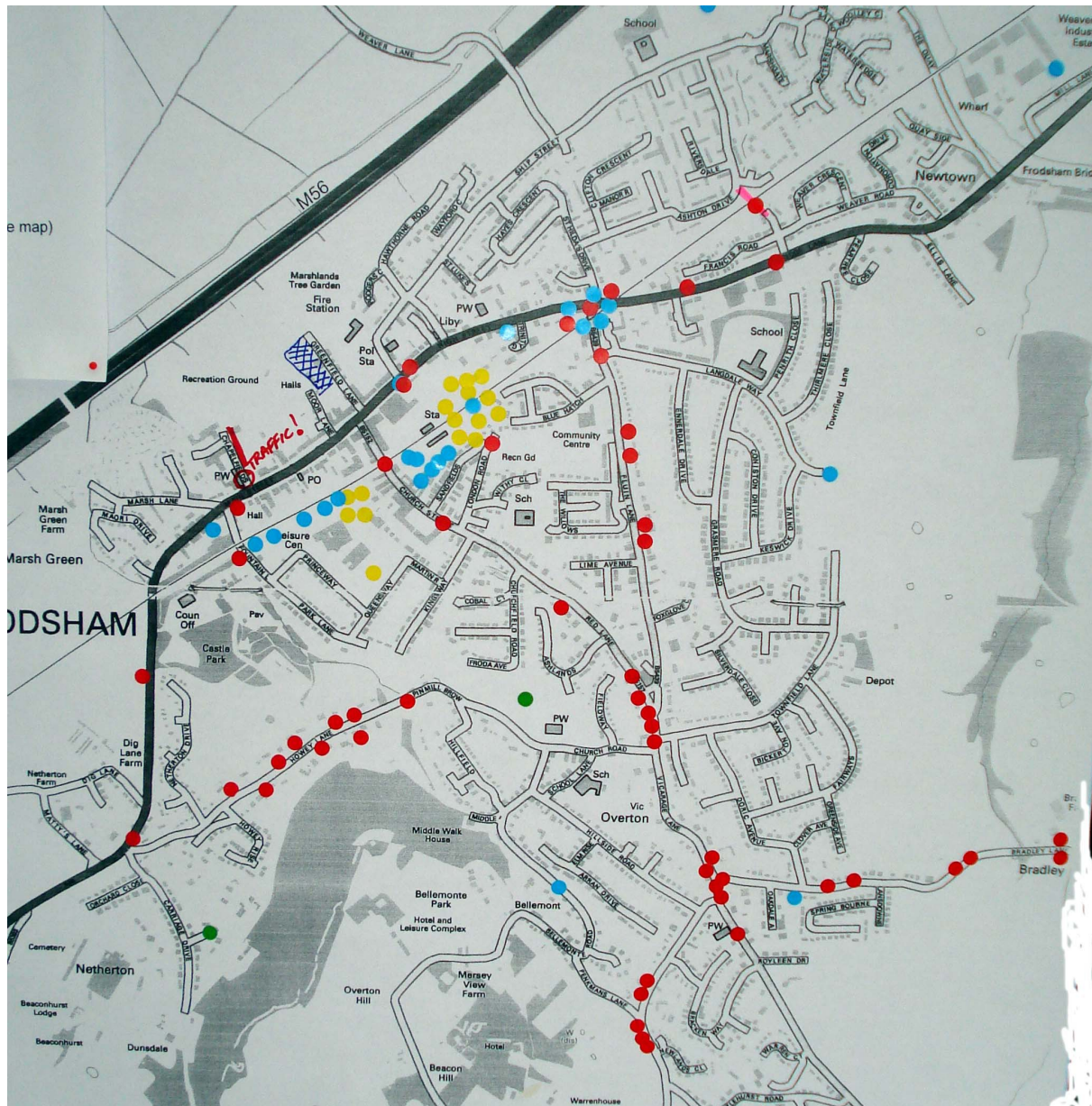
Annex 1 – Summary of Visitors Comments (Maps with Sticky Dots)

Key:

- Yellow – Multi-storey parking facility
- Red – Pedestrians felt unsafe
- Green – Town Square
- Blue – Grot spots

Figure 1 – Frodsham & Surrounds

1. This map was one of two that attracted the most attention and an almost continuous discussion throughout the day.



2. *Numbers of Dots:*

- Red: 53
- Blue: 26
- Yellow: 16
- Green: 3

3. Clearly people were most energised by two issues, pedestrian safety and tidiness / appearance. Of these, the safety of pedestrians (red dots) was the primary focus.

4. Some specific locations emerged as primary areas of concern:

- Fluin Lane, particularly the junctions with Vicarage Lane at one end and the A56 at the other
- Howey Lane
- Bradley Lane, notably the junction with Vicarage Lane
- Manley Road, notably the point at which it is joined by Newlands Road and Penkmans Lane
- A number of locations on Main Street / High Street at junctions with side roads

5. Moving onto the grot spots (blue dots) three areas were the focus of attention:

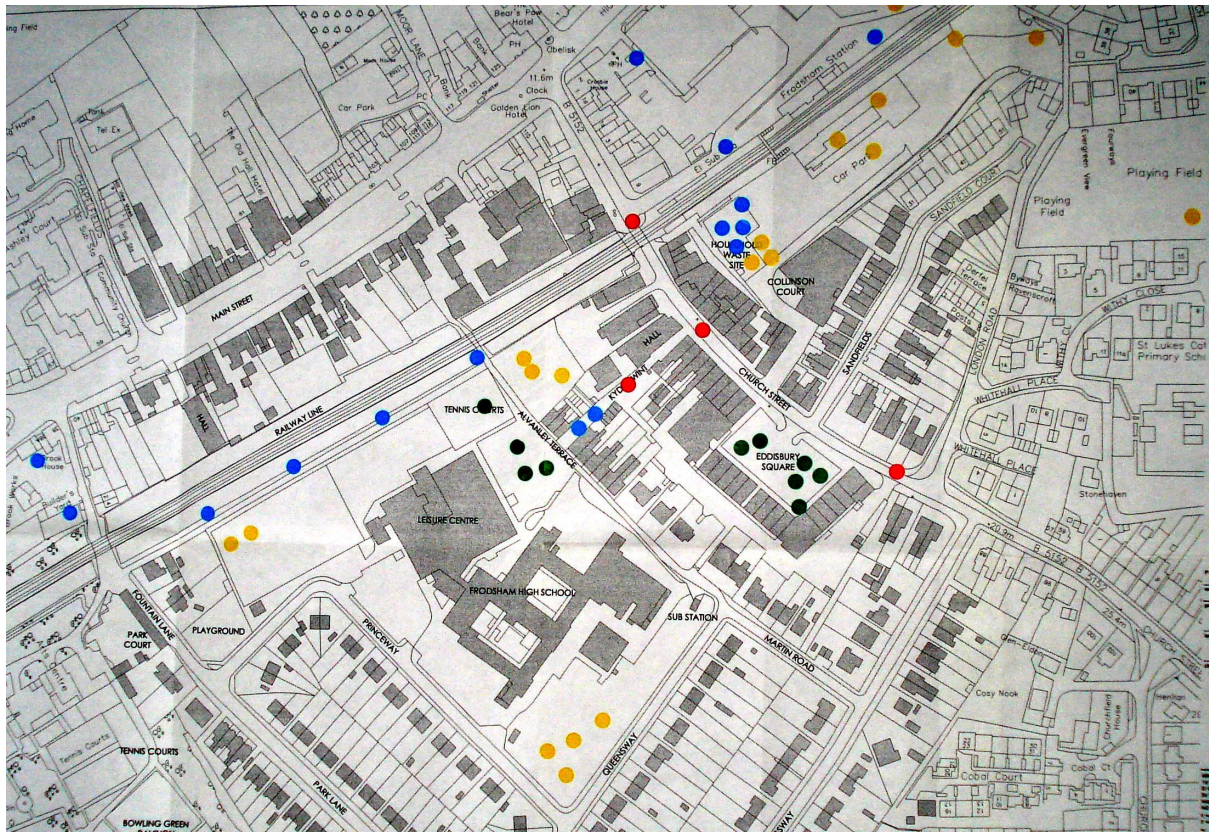
- The junction between Fluin Lane and High Street
- The area occupied by the recycling centre
- The footpath running between the railway and the all-weather pitch

6. Locations for a multi-storey car park (yellow dots) were centred on two locations:

- The back end of the station car park
- The land at the back of WH Smith off Church Street

7. The town square locations (green dots) appear a bit strange on this map except for the idea of Churchfields. The green dots appear in significant numbers on the town centre map, figure 2.

Figure 2 – Frodsham Town Centre



8. Numbers of Dots:

- Yellow 19
- Blue 15
- Green 10
- Red 4

9. Some additional thoughts on locations for the multi-storey car park (yellow dots) emerged to those identified in figure 1:

- The all-weather pitch by the railway line
- The land behind the medical centre

10. The grog spots (blue dots) were similar to figure 1, but with the addition of:

- Kydds Wynt (the route from Church Street to the Medical Centre)
- The Brook Works at the junction of Fountains Lane and Main Street

11. Town Centre ideas (green dots) focused on two locations:

- Eddisbury Square
- The land between Alvanley Terrace and the Medical and Leisure Centres

12. Pedestrians felt unsafe (red dots) at the following specific locations:

- On Church Street at the junctions with London Road, Kydds Wynt and the access road to the Station / Morrisons
- In Kydds Wynt itself

Launch Event

Annex 2 – Summary of Visitors Comments (Map with Coloured pen Markings)

Figure 3 – Frodsham Area



1. A great deal of time was spent by visitors on this map and was a continuous source of discussion throughout the day.
2. Beginning with the green spaces, the existing open areas within the area were highlighted without seeming contradiction:
 - Saltworks Playing Fields
 - Community Centre upper field
 - Churchfields
 - Castle Park
 - Frodsham Hill
 - Other areas adjacent to Francis Road, Keswick Drive, Fairways and Bradley Lane were also highlighted
3. People had differing views (red / green) on the following areas:
 - The large area on the right of the map running from the end of Ellis Lane down to Bradley Lane
 - The land by the River Weaver on the opposite side of the A56 to Mill Lane
 - Land off Ellis Lane
 - Land off Ship Street
 - The Community Centre lower field
 - Townfield Lane Allotments
 - Some land adjacent to the A56 between Netherton and the Railway Bridge
4. Some clear and unchallenged proposals emerged for building development:
 - a Within the town area
 - Behind the medical centre
 - Adjacent to the station car park
 - On the corner of Fountains Lane and Princeway
 - Sprostons Yard
 - b On the outer edges of the town (some in green belt land)
 - Between Netherton and the railway bridge on farmland adjacent to the A56
 - Adjacent to the Weaver Park industrial estate
 - Next to Bradley Lane
 - Next to Penkmans Lane
 - Individual plots off Bellemonte Road, Simons Lane and Carriage Drive
5. Finally some ideas were posted:
 - Move the railway station to the land adjacent to the railway bridge over the A56 opposite Castle Park
 - A car park at the bottom of Greenfield Lane
 - Move St Luke's School to a site adjacent to Weaver Vale School and build on the vacated land
 - Build a new high school on the site of the old one
 - Land behind the medical centre should be used for accommodation for the retired.

Launch Event

Annex 3 – Summary of Visitors Comments (Post-it Notes)

	Likes	Dislikes	Wish to Change	Wishing Tree
Economic (LP SO 1 - 5)				
Comprehensive review of station car park / tip / goods shed site including consideration of office space to bring in jobs and service / retail customers			1	
Develop land near Leisure / Health Centres to include car parking & town centre for use for events			1	
“Make Eddisbury Square the town square”			1	
A Marina with a pub/wine bar & shops				3
Renovated Swing Bridge	1			
Independent shops in Main Street	1			
Town Centre	1			
Transport links / motorway networks	2			
Gridlock when M56 closed / resulting pollution		2		
Improve pavement access in Church Street			1	
Lack of safe pedestrian crossings		1		
Improve traffic/parking management to relieve congestion			3	
Lack of imaginative traffic & parking management / difficult parking		3		
Parking in Eddisbury Square		1	1	1
Parking on Kingsway		1		
Lack of multi-storey car park or other solution for parking		2		
“Thought of a multi-storey car park – not in keeping with village / market town”		1		
Fix the unstable cliff at NE end of station car park				1
Speeding / noisy traffic (inc on Bridge Lane, Fluin Lane & Red Lane)		5	1	
Lack of traffic calming measures in Fluin Lane		1		
Improve traffic flow on Fluin Lane / Bridge Lane			1	
No traffic lights or safe pedestrian crossing in Fluin Lane / dangerous junction		5		
Traffic light controlled pedestrian crossing on Vicarage Road near Bradley Lane/Manley Road			1	2
Too much traffic on Bradley Lane – unsafe for pedestrians		1		
Speeding traffic, including lorries, on Bradley Lane		1		
Traffic lights or roundabout at Fluin Lane/High Street/St Hilda's Drive junction			2	3
Make Howey Lane 1-way			1	1

	Likes	Dislikes	Wish to Change	Wishing Tree
Make roads round the Health Centre (Fountain Lane & Kingsway) 1-way			1	
Lack of enough parking spaces on Main Street		1		
Mark parking spaces on Main Street more clearly			1	
Parking restrictions (2 hrs?) in Main Street			2	
Strict double yellow-line parking enforcement			1	
Ban double-parking of taxis on Main Street and parking of taxis in bus stops			1	
Release parking spaces on Main Street passing trade			1	
Lack of parking spaces for shoppers with commuters filling up the station car park		1		
Free time-limited & area for paid all-day parking at Station car park			4	
Spread out disabled parking spaces (currently in two groups) on Main Street			1	
Parking on pavements		5		
Ban parking on pavements (opposite St Luke's Church)			1	
Charge for parking for over 2/3 hours			1	
Charge for parking for over 5 hours between 8am – 6pm			1	
Lack of public transport to nearby towns (eg Northwich)		1		
Bus link between Frodsham & Halton stations till Halton Curve opens			1	
Halton Curve for direct public transport to Liverpool			1	1
No rail / public transport link to Liverpool / Airport		8		
Shops & their variety	9	1		
Choice of Pubs / Restaurants / Coffee shops (meeting places)	7			
Lack of diversity in restaurants (Greek, Italian, Turkish etc)		2	1	1
Fewer coffee shops / more useful shops (eg haberdashery & household goods)				1
More stalls on Market day				1
Market in Main Street [Note: Must not block pedestrian crossings & pavements]	1			
Proximity to Chester / Liverpool / Manchester	2			
Lack of opportunity for small business (2-3 people) set-up		1		
Too many planning consents make for inadequate parking provision		1		

	Likes	Dislikes	Wish to Change	Wishing Tree
Social (LP SO 6 - 8)				
Engage Ship Street residents more effectively in community and in the NP process			1	
“Everything!”	1			
“People moaning about our lovely town”		1		
Safe Community	1			
Friendly people / Village-market town feel / Engaged community	12			
Opportunities for community to “have their say” and get involved.	1			
“Meeting genuine Frodsham people – all on the same level – all born here”	1			
Choice of Primary Schools	1			
Build bungalows suitable for elder citizens on site near Leisure & Health Centres				1
More affordable housing for young people & families				2
Rebalancing of housing mix to reflect local needs including adequate affordable housing			1	
Lack of affordable housing		1		
Access to amenities (shops, doctors, dentists, library, chemists, post office, transport)	3			
Uneven pavements in residential areas – unsafe for wheelchairs & pushchairs		1		
No safe cycle route to Helsby High School		2	1	
Having to pay bus fares to Helsby High School		1		
Castle Park & its restored buildings	6			
Leisure Centre	1			
Upgrade Leisure Centre (with swimming pool)				2
Library	2			
Health Centre	1			
Community Centre	2			
Arts Centre & Community Centre activities	2			
Talented local performing groups (drama, opera etc)	3			
Church activities	1			
More cultural events in Castle Park				2
Local museum & visitors' centre			1	
Christmas Festival	2			
October Craft Fayre	1			

	Likes	Dislikes	Wish to Change	Wishing Tree
Drain Saltworks playing fields and provide pavilion & WCs			1	
Improved access to Saltworks area			1	
Improved parking in Townfield Lane			1	
No High School		1		
No decent play area		1		
Lack of facilities for young people		1		
Becoming more difficult to see a GP		1		
“LGBT Groups?”			1	
Town Hall				1
Environmental (LP SO 9 – 16)				
Move the tip / recycling centre away from town centre (poor access)			3	
Move main tip to land beyond Gleaves' site, retaining a 'bit tucked away' recycling facility for glass, paper etc on current waste site			1	
Keep the skips in the town centre (more environmentally friendly) but move to far end of car park (safer & less congestion).			1	
Move waste bins at OHMF to a more suitable site – not in direct line of vision from the seats				2
Maintain Green Belt, footpaths & countryside aspect of Frodsham				1
Open fields and wet meadows on Sutton Causeway	1			
Hob Hey Wood	1			
Overton Hill	1			
Access to countryside / green spaces	6			
Footpaths / walks	7			
Better maintained & lit footpaths			1	
Footpath from Howey Lane			1	
Footpath from Ship Street to Marsh Lane – south of A56			1	
Footpath from Alvanley Terrace to Church Street (opposite footpath from Fountain Lane)			1	
Canoe passage from Navigation Canal to River Weaver			1	
Fewer cars				1

	Likes	Dislikes	Wish to Change	Wishing Tree
Not Categorised				
Lots of Wishing Trees				1
Council that works				1
The Town Council		1		
“FTC 'telling' Frodsham what it should have! Listen to people”		1		